



South
Wisconsin
District



**WHAT'S
YOUR 80?**

1942–2022 — 80 Years of God's Grace

**80 diapers
made from
80 tee shirts
for Ukrainian
refugees in
Poland**

**-submitted by
Janet Hessler**





WHAT'S YOUR 80?

1942–2022 — 80 Years of God's Grace

8- \$10 Kwik Trip gift cards for
The New Day Women's
Center in Elkhorn,
a Christian
organization helping
pregnant women

-submitted by
Faith Lutheran,
Sturtevant





WHAT'S YOUR 80?

1942–2022 — 80 Years of God's Grace

At the Spring
Rally collected
OVER 80
hygiene items for
Harbor House of
Calumet County

-submitted by
Zone 10



WHAT'S YOUR 80?

1942–2022 — 80 Years of God's Grace



Played these 25 games a total of 80 times this year
in honor of LWML's 80th Anniversary.

80 times to relax and refresh for more ministry work in God's kingdom!

-submitted by Sr Pastoral Counselor Pastor Matthew Gehrke



WHAT'S YOUR 80?

1942–2022 — 80 Years of God's Grace



Over 80 crosses and bookmarks created and distributed at Easter Services.
-submitted by St Peter's Lutheran, Hilbert

WHAT'S YOUR 80?

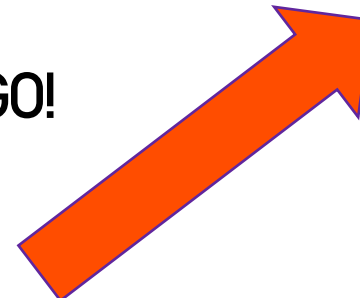
1942–2022 — 80 Years of God's Grace

Sun. Mar. 20, 22	4.0	(56.80)
Mon. Mar. 21, 22	2.0	(62.80)
Mon. Apr. 4, 22	1.6	(64.40)
Thurs. Apr. 7, 22	1.8	(66.20)
Sun. Apr. 10, 22	2.0	(68.20)
Mon. Apr. 11, 22	2.0	(70.20)
Fri. Apr. 15, 22	2.0	(72.20)
Tues. Apr. 19, 22	.8	(73.00)
Wed. Apr. 20, 22	2.0	(75.00)
Sat. Apr. 23, 22	2.5	(77.50)
Thur. Apr. 28, 22	2.0	(79.50)
* Fri. Apr. 29, 22	3.0	(82.50)
Wed. May 4, 22	1.2	(83.70)
Thur. May 5, 22	3.0	(86.70)
Sat. May 7, 22	1.0	(87.70)



A total of 80 miles walked! Way to GO!

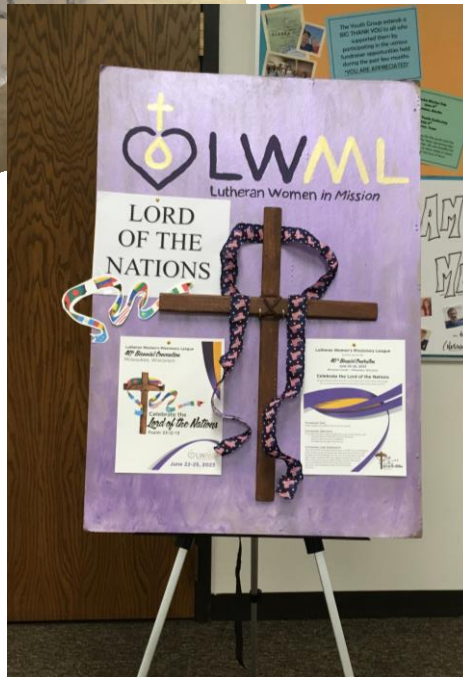
-submitted by
Eunice Matter





WHAT'S YOUR 80?

1942–2022 — 80 Years of God's Grace



Held “The 8th for 80 “
celebration with a coffee
hour and donut sale of
purple glazed donuts to
raise funds to host the
2023 LWML convention

-submitted by
Bethlehem Lutheran,
Sheboygan



WHAT'S YOUR 80?

1942—2022 — 80 Years of God's Grace

**Bake sale for
missionary support
& mites
(notice the empty
table...sale was a
success!)**

**-submitted by
St. Paul's Lutheran,
Oconomowoc**



WHAT'S YOUR 80?

1942–2022 — 80 Years of God's Grace



**80 PILLOWCASE
DRESSES
LOVINGLY SEWN
FOR THE ORPHAN
GRAIN TRAIN**

**-SUBMITTED BY
MONONA
LUTHERAN,
MONONA**



WHAT'S YOUR 80?

1942–2022 — 80 Years of God's Grace

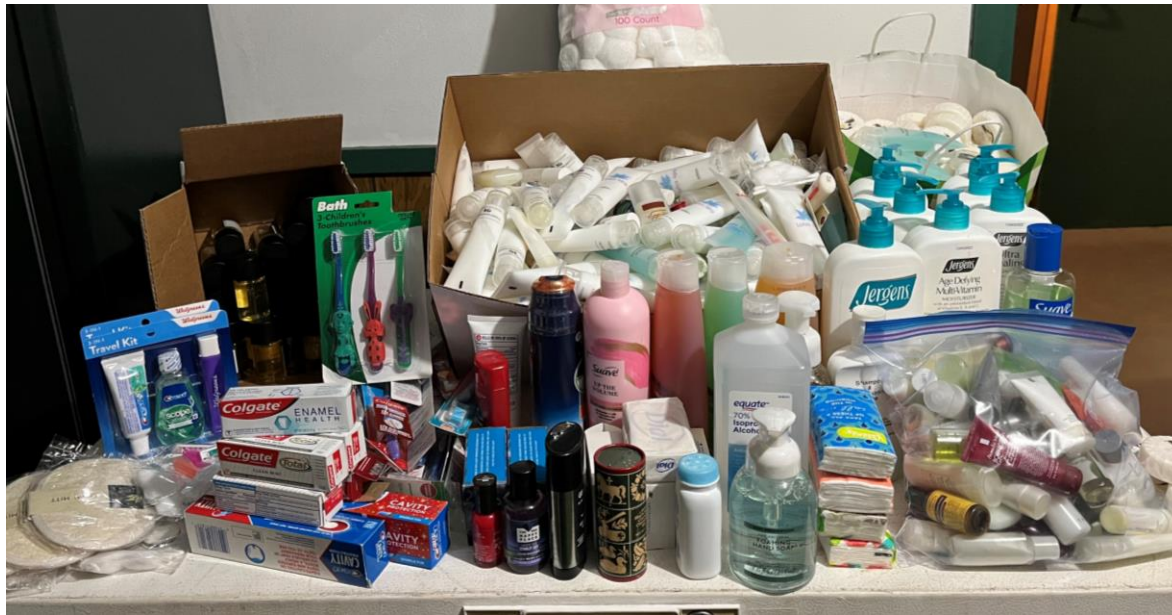
80 LWML bookmarks
colored for the
Hispanic Ministry

-submitted by
Bethlehem Lutheran,
Wales





A large group of approximately 30 people, mostly seniors, posing behind a long table filled with various food and household supplies. The items include boxes of cereal, bags of rice, cans of soup, and bottles of cleaning products. A sign on the table reads "FOOD PANTRY".



80 health care items donated to Community Action

-submitted by Trinity Lutheran, Wisconsin Dells



WHAT'S YOUR 80?

1942–2022 — 80 Years of God's Grace



-80 hygiene kits for Orphan Grain Train-

Items donated by day school & congregation

Kits assembled by LWML group & confirmation class

-submitted by St. John's Lutheran, Portage

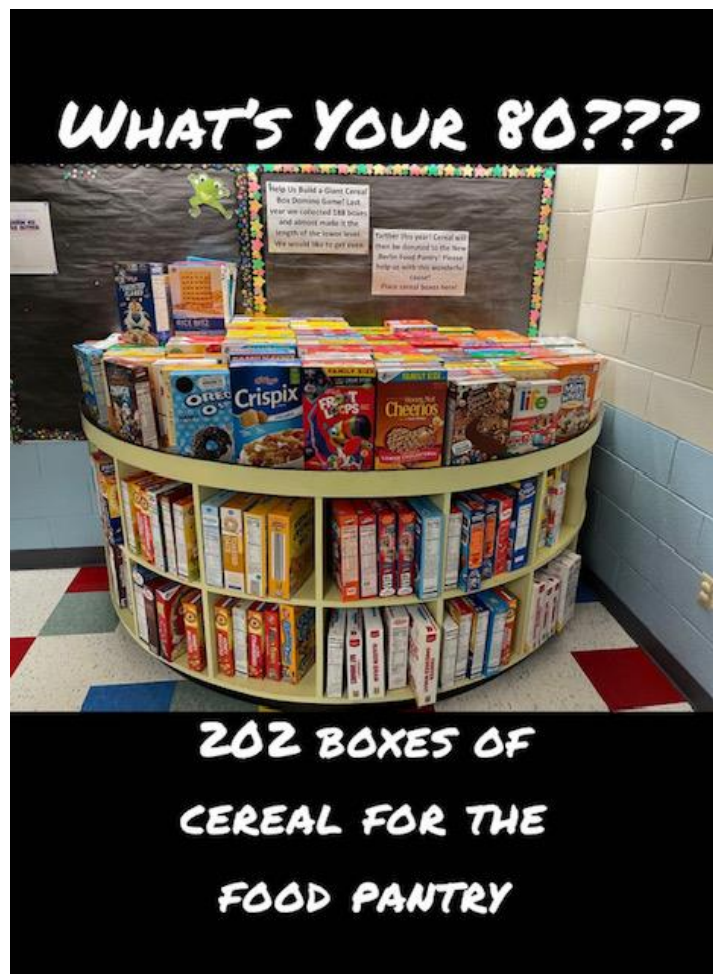


WHAT'S YOUR 80??

1942–2022 — 80 Years of God's Grace

**202 BOXES OF
CEREAL DONATED
FOR THE LOCAL
FOOD PANTRY**

**-SUBMITTED BY
BLESSED SAVIOR,
NEW BERLIN**



80 baby items for
A Place of Refuge
and 80 quilts for
Ukraine

–submitted by
Blessed Savior,
New Berlin





WHAT'S YOUR 80?

1942–2022 — 80 Years of God's Grace



Variety of plants offered-donations went to mites- \$483.70 raised!
-submitted by St Peters Lutheran, Reedsburg



WHAT'S YOUR 80?

1942–2022 — 80 Years of God's Grace

OVER 100 EASTER,
THINKING OF YOU,
GET WELL CARDS
HANDMADE FOR
SHUT INS AND
OTHER
CONGREGATIONAL
MEMBERS.

**-SUBMITTED BY
TRINITY LUTHERAN,
BELOIT**





WHAT'S YOUR 80?

1942–2022 — 80 Years of God's Grace

**80 quilts
wonderfully
handmade for the
Orphan Grain Train**

**-submitted by
Immanuel
LIGHTS/LWML
Immanuel Ev.
Lutheran Church,
Mayville**





WHAT'S YOUR 80?

1942–2022 — 80 Years of God's Grace

80+ grocery items
collected for the
Waushara County
Food Pantry

**-submitted by
Zone 13**





WHAT'S YOUR 80?

1942–2022 — 80 Years of God's Grace



Celebrating 80 years of LWML
-special fabric corsages for Zone 2 representatives at
LWML SWD Convention

-submitted by Karen Miller

WHAT'S YOUR 80?

1942–2022 — 80 Years of God's Grace



80 Easter cards
created for local
veterans

-submitted by
St. Paul Lutheran,
Grafton



WHAT'S YOUR 80?

1942–2022 — 80 Years of God's Grace

80 QUILTS
LOVINGLY
CREATED AND
GIVEN TO THE
ORPHAN GRAIN
TRAIN

**-SUBMITTED BY
ST STEPHEN
LUTHERAN,
HORICON**





WHAT'S YOUR 80?

1942–2022 — 80 Years of God's Grace



80 origami Portals of Prayer candles, handed out at the Zone 17 Spring Rally.

-submitted by St John's Lutheran, Sullivan



WHAT'S YOUR 80?

1942–2022 — 80 Years of God's Grace



80 LWML cookies baked, frosted and decorated, served at luncheon prior to congregational voter's meeting.

-submitted by Phoebe Society, Trinity Lutheran Town Wilson (Sheboygan)



WHAT'S YOUR 80?

1942–2022 — 80 Years of God's Grace

80s Birthday Party!

**-submitted by
Good Shepherd
Mary Martha
Guild,
East Troy**





WHAT'S YOUR 80?

1942–2022 — 80 Years of God's Grace

80 cans of food collected
for the Mayville Food
Pantry

–submitted by
St John's Dorcas Society,
Mayville





WHAT'S YOUR 80?

1942–2022 — 80 Years of God's Grace



80 YUMMY COOKIES MADE TO SERVE AT A LENTEN DINNER

-SUBMITTED BY ST. JOHN LUTHERAN, RANDOM LAKE



WHAT'S YOUR 80?

1942–2022 — 80 Years of God's Grace

**More than 80 items
collected and
donated to the
Milwaukee Rescue
Mission**

**-submitted by
First Immanuel
Lutheran,
Cedarburg**





WHAT'S YOUR 80?

1942–2022 — 80 Years of God's Grace

Supporting the next
generation,
\$80 donation
to Grace Youth group
to attend National Youth
Gathering

**-submitted by
Grace Ladies Guild,
Oak Creek**





WHAT'S YOUR 80?

1942–2022 — 80 Years of God's Grace



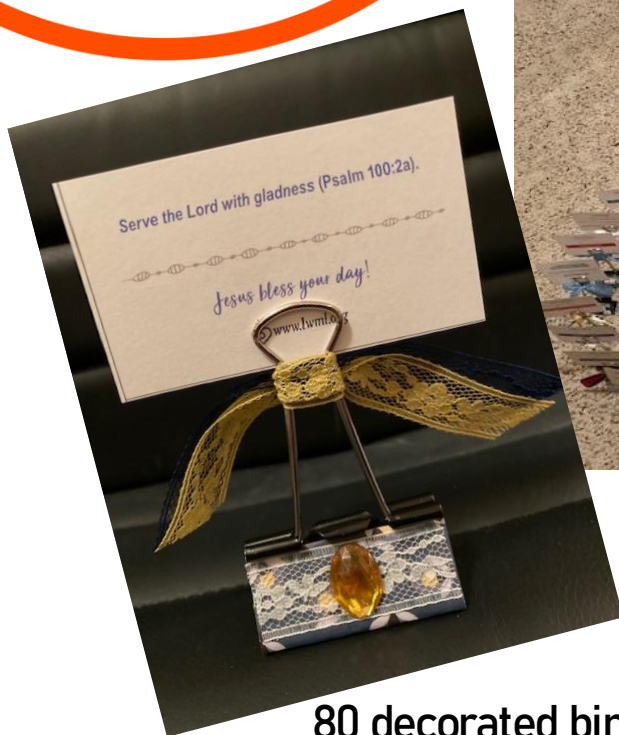
80 LWML Easter cards for congregational shut ins, residents of Omro Care Center and the Country Villa Assisted Living

-Submitted by Grace Ev. Lutheran Church Ladies Guild/ LWML, Omro



WHAT'S YOUR 80?

1942–2022 — 80 Years of God's Grace



80 decorated binder clips to display photos, mementos, encouraging words given to Pine Haven Christian Communities.

-submitted by Kathryn Cota



WHAT'S YOUR 80?

1942–2022 — 80 Years of God's Grace

80 PAIRS OF SOCKS COLLECTED &
DONATED TO THE HOSPITALITY
CENTER IN RACINE
-SUBMITTED BY HOLY CROSS-
CROSS & CROWN MISSION SOCIETY,
RACINE



WHAT'S YOUR 80?

1942–2022 — 80 Years of God's Grace



**160 valentines crafted for nursing homes in
Muscoda and Richland Center.
Everyone got in on the fun-
ladies, gents and Sunday School kids!**

-submitted by St Peter's Lutheran, Muscoda



WHAT'S YOUR 80?

1942–2022 — 80 Years of God's Grace



80 Luminaries in support of 40 Days of Prayer for Milwaukee
-submitted by Pilgrim Lutheran, Milwaukee



WHAT'S YOUR 80?

1942–2022 — 80 Years of God's Grace



80 Luminaries-**EVERYONE** helped!



WHAT'S YOUR 80?

1942–2022 — 80 Years of God's Grace



Luminaries were lit from Maundy Thursday thru Easter Sunday



WHAT'S YOUR 80?

1942–2022 — 80 Years of God's Grace





**You did
GREAT!**

THANK YOU ALL!